

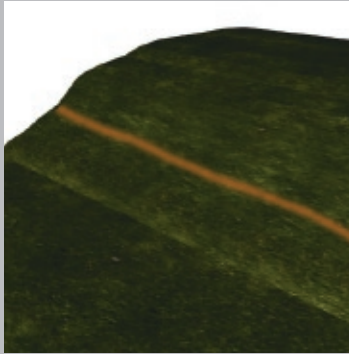
INSTALLATION GUIDE

What you will need:

Retaining Wall Units
Base Materials
Level
Stakes
String Line
Compactor
Hand Tamper
Broom
Adhesive

STEP 1: PLANNING

Locate all utilities and contact local utility companies before digging. Mark a line where the front of the wall will be placed, keeping in mind that some wall systems stack vertically and some will have a setback when stacked. This setback may affect the position of the first row of block. It is important to choose the right wall system for your project. Some retaining wall projects may require engineering. Consult a professional.



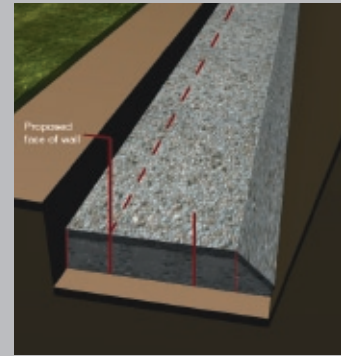
STEP 2: EXCAVATE

Remove soil and excavate a trench to accommodate the granular base and first course of block. The trench width (front to back) should be no less than twice the width of the block being used. This is to account for the drainage layer behind the wall. The trench depth assumes one unit is buried in addition to the depth of the granular base. However as the wall height increases, depth of embedment also increases. The native foundation soil should be checked to make sure it is firm and capable of supporting the finished wall.



STEP 3: GRANULAR BASE

The base should be started at the lowest elevation of the wall. The base should be composed of well-graded, free-draining (less than 8% fines), angular gravel material, and compacted thoroughly. The granular base should be the same depth as the block being used and twice the width (front to back). This is to account for the drainage layer behind the wall. In some situations it may be necessary to step the base. This is when the grade in front of the wall slopes up or down, the base must be stepped to compensate.



STEP 4: FILTER

Lay the approved filter fabric (geotextile) along the bottom of the rear of the trench and extend up the exposed excavation to the proposed wall height. Leave adequate material at the top to fold back towards the wall (completely containing the drainage material). Stake the filter cloth against the slope during construction.



STEP 5: DRAINAGE

Various options for the drain placement exist, depending on how the pipe is to be out let. The drain may be outlet through the wall face or connected to a positive outlet. The drainage system is extremely important and outlets must be planned prior to construction. At the rear of the base, allow the granular material to slope down on the sides towards the drain trench. In the area behind the base, place the approved drain tile (perforated drain with filter sock) on top of the filter cloth. Drain tile must be sloped at a minimum of 2%.



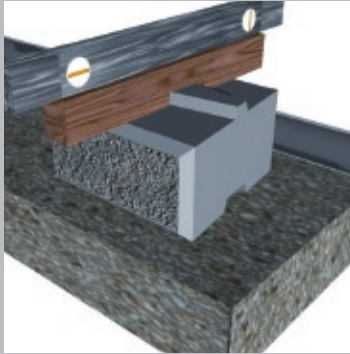
INSTALLATION GUIDE



NOTE: The illustrations shown are for the StackStone SRW conventional vertical retaining wall system. For a more detailed Pisa2, RomanPisa, Cornerstone, or SienaStone conventional and reinforced SRW installation, please consult a qualified SRW retaining wall contractor or an Expocrete representative.

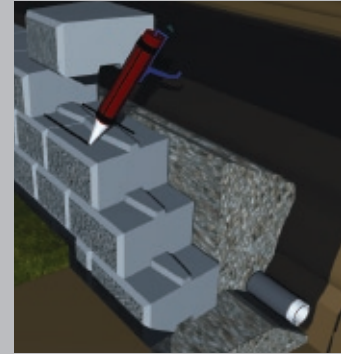
STEP 6: PLACE THE FIRST COURSE

Position a level string line to mark the location of the first course. This can be determined by placing a block in the middle of the compacted granular base. Extra care should be taken at this stage as it is critical for accurate alignment. Ensure units are level front to back and left to right.



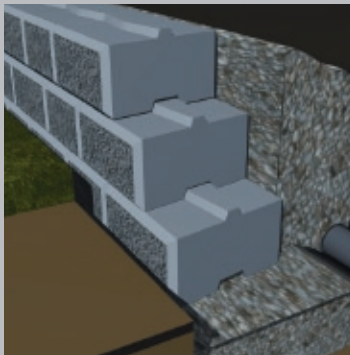
STEP 8: PLACE THE COPING UNITS

Various coping units are available depending on the desired look. A layer of concrete adhesive must be applied to the top course in order to fix the coping units in place. Place the coping unit firmly on top of the adhesive, ensuring both surfaces are free of debris, and apply pressure to secure. Follow adhesive installation guidelines.



STEP 7: STACK UNITS & BACKFILL MATERIAL

Sweep tops of the placed units to remove any debris and stack next course in a running bond pattern so that the middle of the unit is above the joint between adjacent blocks below. Continue stacking courses to a maximum of four courses before backfilling. A free-draining, 19 mm (3/4in.) clear stone drainage material is placed immediately behind the wall and compacted with a light manual tamper. The drainage layer must be a minimum of 300 mm (12 in.) thick and protected from the native material by the filter cloth. Continue stacking and backfilling as described.



STEP 9: ENCAPSULATE DRAINAGE LAYER AND FINISH GRADING

Fold the excess filter cloth over the top of the drainage layer and extend up the back face of the coping unit. An impervious layer of soil can be placed on top of the filter cloth and compacted manually. Slope the surface above and below the wall to ensure water will flow away from and not accumulate near the wall units.

